


# Drilling and milling head, angular-Y, left hand collet chuck, ER20A, PRECI-FLEX®, external coolant supply

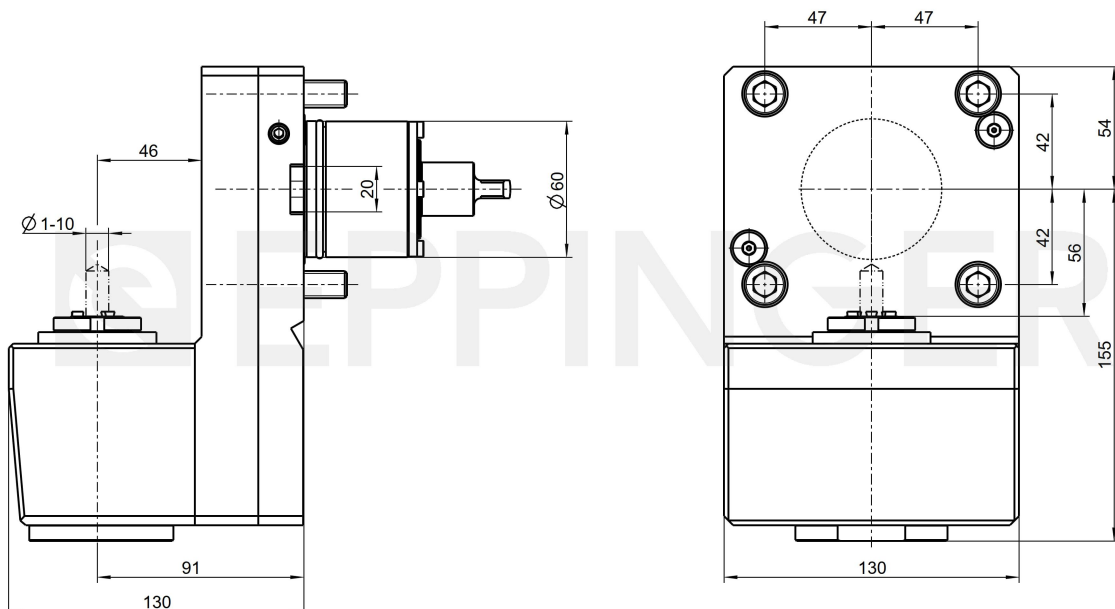
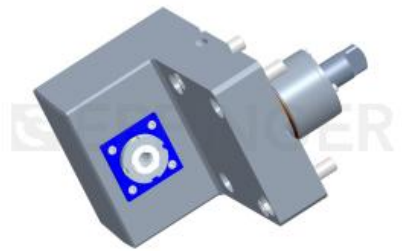


**Part Number 1088684**

**for DMG MORI NL/NLX1500/2000/2500/3000/4000-750 (BMT60) 12 Stationen**

Ratio **1:1**  
 rpm at Input **max. 8000 rpm**  
 rpm at Output **max. 8000 rpm**  
 Torque at Output **max. 25 Nm**  
 Direction of Rotation   
 Scope of Delivery **without wrench and collets**  
**Important ! two disk stations are required**

Accessories Collets see Equipment for Toolholders Z2.1  
 Wrench for spindle 10006



Technical Data Subject to Change

12.09.2022 | 15.09.2022